

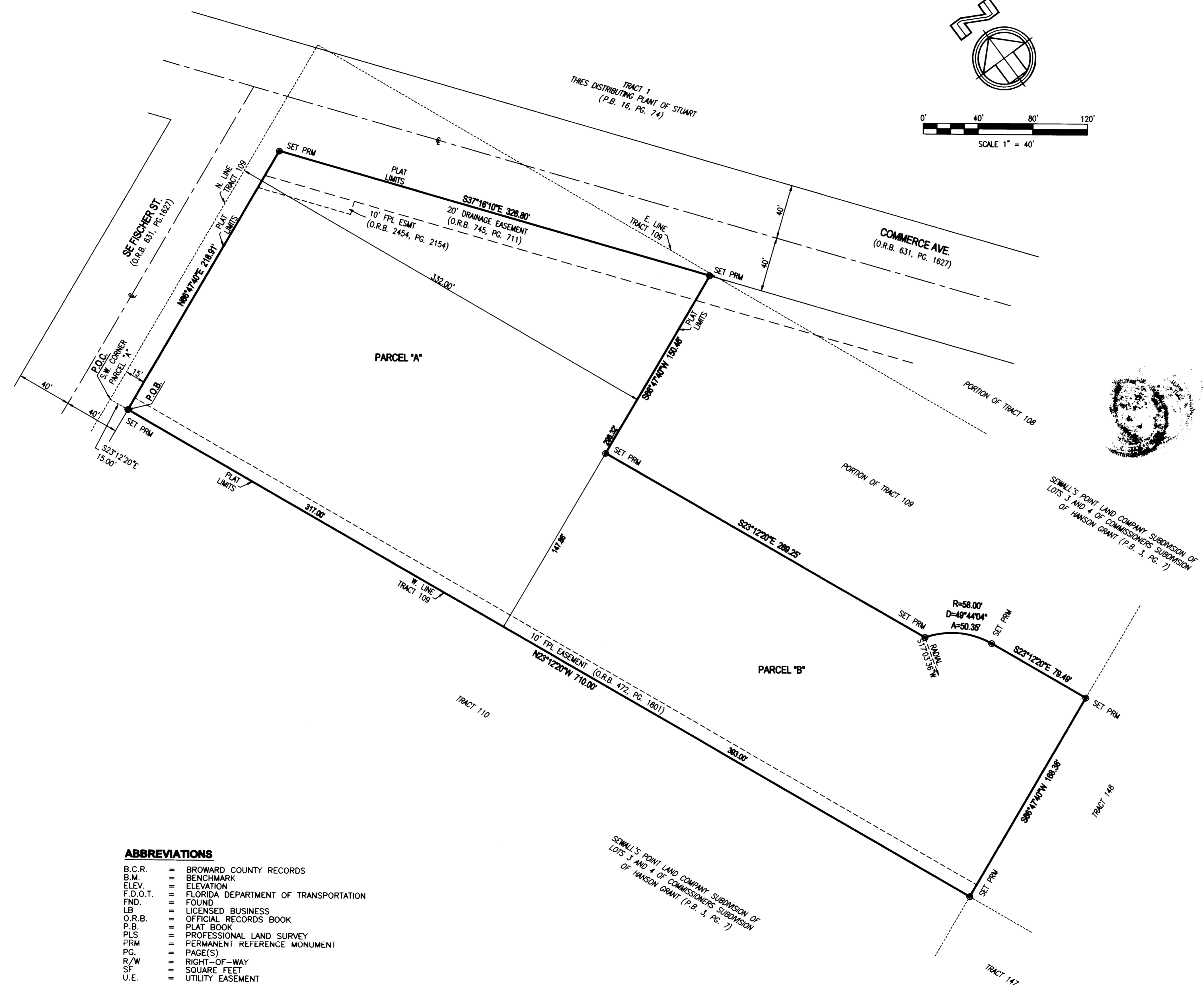
HOOVER PROPERTY STUART

Plat Book 17 Pg 10

A REPLAT OF A PORTION OF TRACT 1 09, "SEWALL'S POINT LAND COMPANY SUBDIVISION OF LOTS 3 AND 4 OF COMMISSIONERS SUBDIVISION OF HANSON GRANT", AS RECORDED IN PLAT BOOK 3, PAGE 7, OF THE PUBLIC RECORDS OF PALM BEACH (NOW MARTIN) COUNTY CITY OF STUART, MARTIN COUNTY, FLORIDA

CLERK'S RECORDING CERTIFICATE
 I, MARSHA STILLER, CLERK OF THE CIRCUIT COURT OF MARTIN COUNTY, FLORIDA, HEREBY CERTIFY THAT THIS PLAT WAS FILED FOR RECORD IN PLAT BOOK PAGE _____, MARTIN COUNTY, FLORIDA, PUBLIC RECORDS, THIS _____ DAY OF _____, 20____.
 MARSHA STILLER, CLERK
 CIRCUIT COURT
 MARTIN COUNTY, FLORIDA
 BY: _____
 DEPUTY CLERK (CIRCUIT COURT SEAL)
 FILE NO. _____

SUBDIVISION PARCEL CONTROL NUMBER: _____



ABBREVIATIONS

- B.C.R. = BROWARD COUNTY RECORDS
- B.M. = BENCHMARK
- ELEV. = ELEVATION
- F.D.O.T. = FLORIDA DEPARTMENT OF TRANSPORTATION
- FND. = FOUND
- LB. = LICENSED BUSINESS
- O.R.B. = OFFICIAL RECORDS BOOK
- P.B. = PLAT BOOK
- PLS. = PROFESSIONAL LAND SURVEY
- PRM. = PERMANENT REFERENCE MONUMENT
- PG. = PAGE(S)
- R/W. = RIGHT-OF-WAY
- SF. = SQUARE FEET
- U.E. = UTILITY EASEMENT

SURVEYOR'S NOTES

1. THIS PLAT, AS RECORDED IN ITS GRAPHIC FORM, IS THE OFFICIAL DEPICTION OF THE SUBDIVIDED LANDS DESCRIBED HEREIN AND WILL IN NO CIRCUMSTANCES BE SUPPLEMENTED IN AUTHORITY BY ANY OTHER GRAPHIC OR DIGITAL FORM OF THE PLAT.
2. THERE MAY BE ADDITIONAL RESTRICTIONS THAT ARE NOT RECORDED ON THIS PLAT THAT MAY BE FOUND IN THE PUBLIC RECORDS OF THIS COUNTY.
3. BEARINGS SHOWN HEREON ARE BASED ON THE WEST RIGHT-OF-WAY LINE OF SE COMMERCE AVE. HAVING A BEARING OF SOUTH $37^{\circ}16'10''$ EAST AS SHOWN ON THE PLAT OF "THIES DISTRIBUTING PLANT OF STUART" (P.B. 16, PG. 24).
4. THERE SHALL BE NO BUILDINGS OR ANY OTHER KIND OF CONSTRUCTION OR PLACEMENT OF TREES OR SHRUBS IN OR ON UTILITY AND/OR DRAINAGE EASEMENTS.

LEGEND

- ⊕ CENTERLINE
- ⊙ SET P.R.M. - 4" DIAMETER X 24" LENGTH CONCRETE MONUMENT W/ BRASS CAP STAMPED LB2936 (UNLESS OTHERWISE NOTED)